

8600-5040 Clear Long-Term Chamber

Designed for use with the PRI-8600D for long-term net carbon exchange (NCE) research.

Key Features

- ✧ Patented pressure vent minimizes soil disturbance and pressure perturbation
- ✧ Built-in sampling circular line with progressive multihole for uniform sampling
- ✧ All-in-one gas and electrical cable assembly with additional protection and multi-connector

Specifications

Chamber Volume: 90500 cm³

Soil Area Exposed: 1936 cm²

Air temperature Range: -40 to +85 °C

Air temperature Precision: ± 0.4 °C

Dimensions: 50.0 cm L × 50.0 cm W × 40.0 cm H, customization is acceptable

Weight: 20 kg



8600-201 Soil Temperature and Moisture Sensor

Soil temperature Range: -40 to +85 °C

Soil temperature Precision: ± 0.2 °C

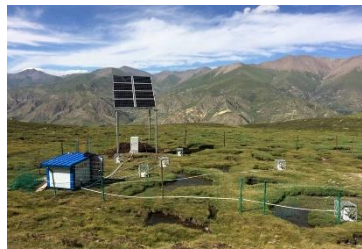
Soil Moisture Range: 0 to 100%

Soil Moisture Precision: ± 3%

Applications



Naqu, Tibet (Altitude >4450m)



Qilian Mountain
(Altitude >3200m)



Xilinhot Inner Mongolia

Specifications subject to change without notice.

Manufacturer: PRI-ECO, China